



SIDING INSTALLER REALIZES \$40K SAVINGS WITH ALLIED BIM



PROJECT:

Prefabricated siding installation at 16,650 sq-ft, new-build townhome

INSTALLER:

Gray Horse Creations (Manhattan, MT)

PRODUCTS:

Fabrication Tools for Revit®
Fabrication Center®
Fabrication Desktop®

LOCATION/DATE:

Bozeman, MT
Summer 2022

THE CHALLENGE

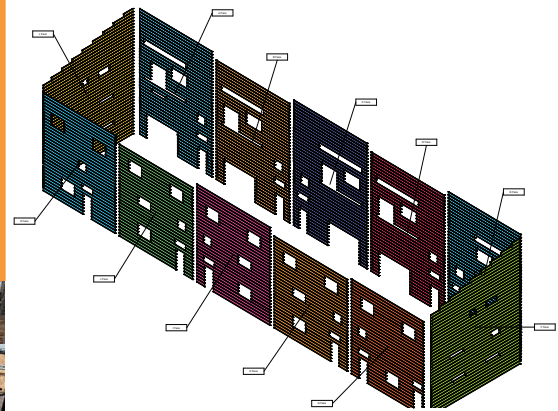
Gray Horse wanted to be innovative and attempt to prefabricate siding for use on future projects.

THE SOLUTION

Allied BIM Services took scan data to provide all lengths and cuts of siding in a BIM model and export it to a roll former for installation, allowing Gray Horse to cut and install 18,000 sq ft of siding in 11 days total. Without the product and service provided by Allied it would have taken an estimated 30 days.

“Working with Allied has been an absolute pleasure. I never had an issue, only solutions. That to me is priceless. It’s a game changer.”

— Brandon Smith, Owner, Gray Horse Creations, Inc., Manhattan, MT



ALLIED BIM ADVANTAGES

- Reducing the job from 30 days to 11 resulted in a 64% increase in productivity.
- The installer estimated that with improvements gained using Allied on this job, the next one could be reduced by 2 more days, providing a 70% increase in productivity.
- Using Allied allowed a savings of 3,000 linear ft of material from the original material take-off, resulting in \$7,500 dollars in material savings.
- Additionally, with \$14,000 in labor savings and machinery rental costs and getting other disciplines on site sooner, the installer estimated \$40,000 in total savings.
- In addition to a rapid ROI on the Allied BIM investment, they also increased safety on the project, improved material processing times/efficiencies and decreased the overall project timeline.

Call or email us today to learn more and schedule a demo!

406-640-8846
support@alliedbim.com
www.alliedbim.com

